

*Delight your little one this Easter with
Corinne Bradd's*

Tilda bunny

Created using beautiful **Tilda** cotton, our girlie rabbit toy is the perfect **springtime** playmate. Her long ears and limbs, plus an endearing embroidered face, gives her plenty of **character** and a pretty pinafore and ribbon-embellished bloomers make her even more **irresistible**. Due to additions of buttons and ribbons, she's best suited as a gift for an older child – that's if you can bear to give her away of course!



essentials

Fabric, cotton, fat quarter: oval rose; white rose; ornament; gingham, green; spotted, teal; plain, white

Felt, pink

Fibre filling

Thread, embroidery

Ribbon, satin, pink, 7mm

Buttons, pink, 15mm, two

Press studs

DIMENSIONS:

Approx 15cm x 52cm

stitch a bunny

1 Fold gingham fabric in half right sides together and trace the body, arm, leg and ear shapes using the templates located at www.sewmag.co.uk. Cut out from both layers leaving a 5mm seam allowance. Fold spotted fabric in half and trace the arm, leg and ear shapes only. Cut out as before.

2 Pair up the pieces, right sides together so that each limb and ear are made of both fabrics and the body is made from gingham only. Set the ears aside and stitch around the remaining pieces, leaving a gap for turning and stuffing where indicated on the pattern.

3 Pin the ears to pink felt and cut to size. Stitch around all three layers leaving a gap at the base. Trim the felt as close to the stitching as possible and turn out so the ears are slightly padded. Turn out all the other pieces and press.

4 Firmly stuff the arms, turn in the raw edges of the gap and oversew closed. Stuff the legs and tack the tops closed. Stuff the head and close up the gap as before. Use a stitch ripper to carefully open part of the seam at the top of the head and body. Make a tuck in the base of each ear and push through the seam gap. Pin in

place and oversew the seam closed, holding the ears in place as you do so.

5 Open the seams at the bottom of the body, insert the tops of the legs and sew closed as for the ears. Pin the arms to the sides of the body and make button joints using strong thread for extra security, passing it through the tops of the arms and the body from button to button several times. Embroider the features onto the face using satin and chain stitches with three strands of embroidery thread, covering any knots with embroidery for a neat finish.

make the shorts

1 Fold over 12cm of white rose fabric right sides in and trace two short pattern pieces on the fold. Cut out with a 5mm seam allowance. Open out and place right sides together. Stitch along the two curved sections. Open out the resulting tube, pin together and stitch the inside legs. Double hem 1cm at the bottom of the legs and slip stitch.

2 Double hem 1cm at the top of the shorts and slip stitch, leaving a 2cm gap in the hem at the back. Use a small safety pin to thread narrow elastic through the channel. Knot the ends together, trim and stitch up the gap.

3 Make a tuck in the bottom of each short leg to narrow the diameter. Secure with a few small stitches and add a pink ribbon bow.



“I have created the bunny’s features by combining several embroidery stitches including satin and chain stitch to add character and dimension” **Corinne Bradd, Sew Designer**



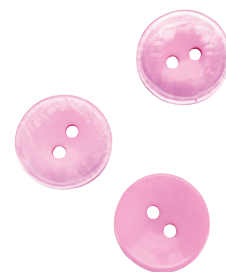


WHAT TO BUY...



Tilda fabrics

Corinne used Oval Rose, White Rose, Ornament, Gingham Green and Spot Teal from the Tilda Kitchen and Flower Garden fabric ranges, available from W. Williams stockists, branches of John Lewis and Hobbycraft. For further information email info@wwilliams.co.uk or call **01623 721425**.



Pretty buttons

To make our bunny's posable arms, attach them using a pair of coordinating buttons like these pale pink marble effect ones. Priced 24p each, www.totallybuttons.com, **01403 754633**.



Toy stuffing

Bring your bunny to life by gently stuffing her with 100% polyester filling. Priced £3.25 per 250g bag, www.abakhan.co.uk, **01745 562100**.

create the tunic

- 1 Cut two tunic pieces from folded oval rose fabric and two from plain white. Open out and cut one piece of each fabric down the centre to make two halves. Pair the fabric pieces up right sides together and stitch around the curved necklines, armholes and straight edges of the back halves.
- 2 Clip the curves, turn out and press each piece. Pin and stitch the slanted sides of the tunic front lining to the

back lining. Fold together, right sides out. Repeat for the sides of the printed fabric. Join the shoulders with French seams for a neat finish.

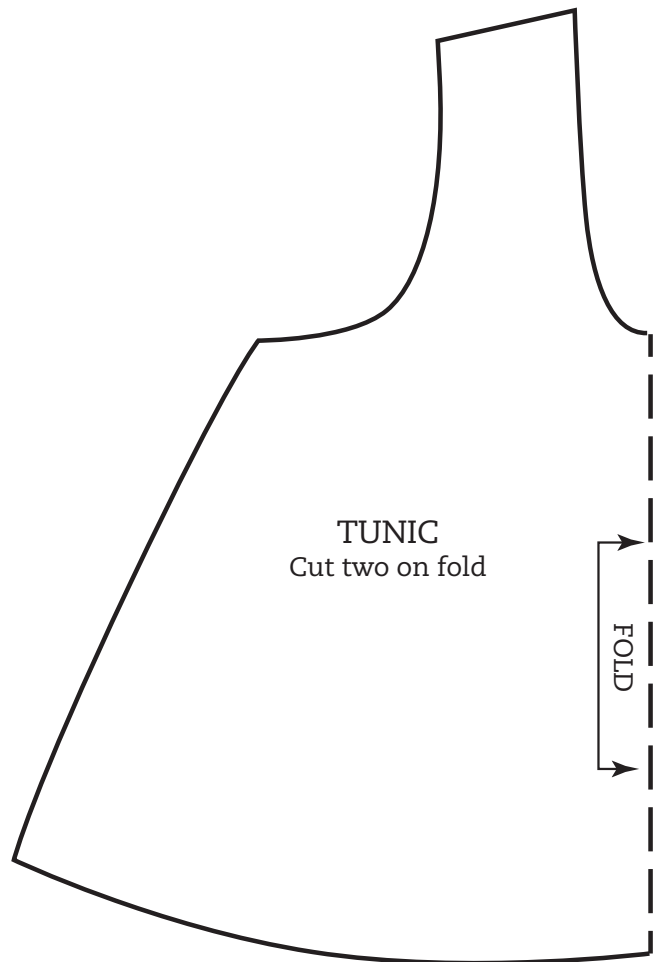
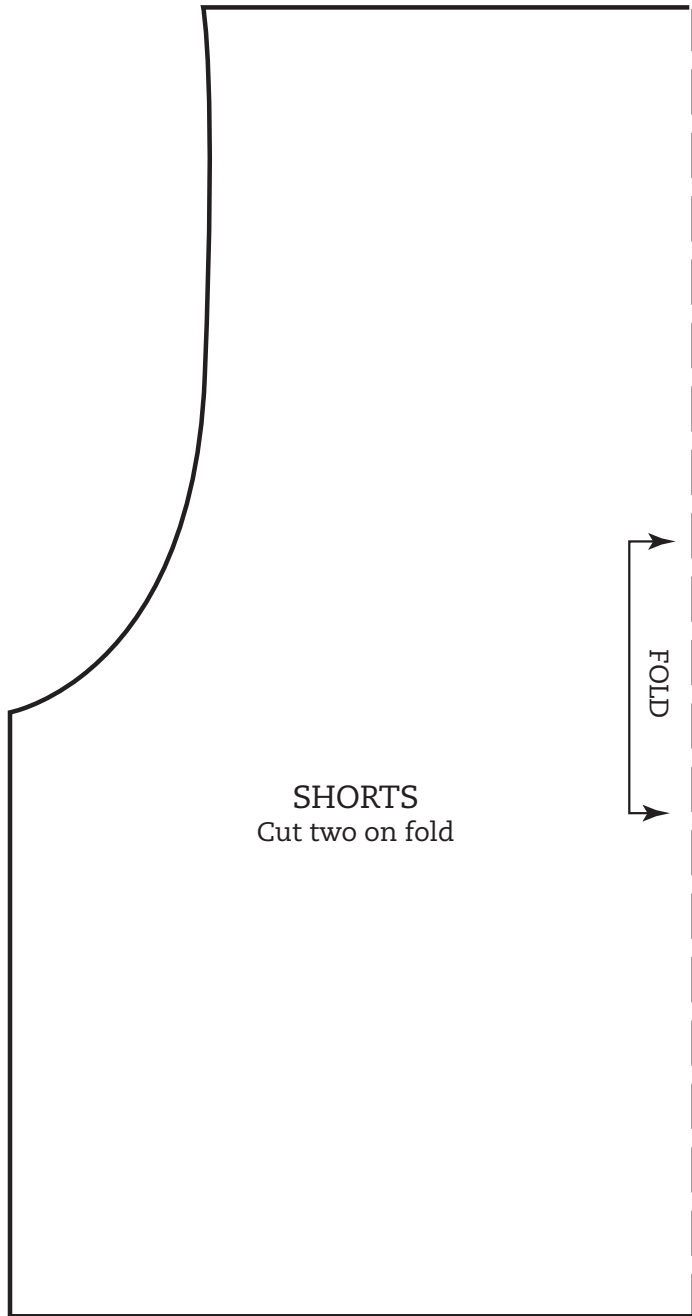
- 3 Cut a strip of green ornament fabric, 6cm x 70cm, and fold in half lengthways, right side out. Press the fold, turn in the short ends and gather the raw edges to the width of the tunic hem (about 42cm). Tack the frill to the edge of the tunic front, right sides and raw edges together.

- 4 Turn down the frill and press. Turn under 5mm of the lining fabric and slip stitch over the raw edges of the frill to hide them. Stitch two pairs of press studs to the back edges of the tunic to fasten.

Adorable bunny toy with removable outfit

hot tip

Why not make more outfits for bunny? A cute pair of dungarees or pyjamas in coordinating Tilda fabrics would look lovely.



Title: Tilda bunny
Designer: Corinne Bradd
Page: 47
Sheet two of three

Gap for stuffing

+

Button
position

B

B

BODY
Cut two

ARM
Cut four

LEG
Cut four

Title: Tilda bunny
Designer: Corinne Bradd
Page: 47
Sheet three of three

Gap for stuffing

BODY
Cut two

A

A

EAR
Cut four

Gap for turning

Gap for stuffing

